

# Alberta 19



Modern Family Living From the moment you enter the Alberta, a long hallway guides you into a spacious open-plan living area that forms the heart of the home. With two bedrooms positioned around a central bathroom, a private master suite with an ensuite, and a double garage, the Alberta is thoughtfully designed for comfortable and contemporary family living.

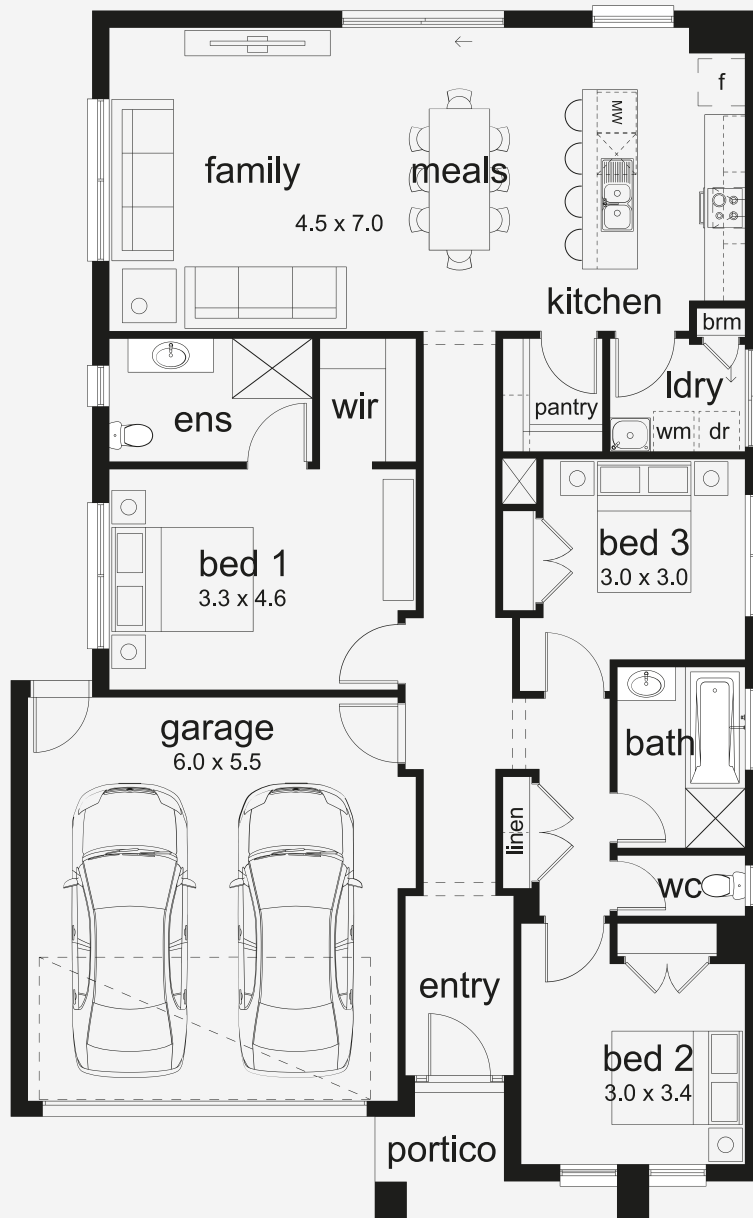
## ASPIRATIONS

House Area

**179.28 m<sup>2</sup>**

Min Lot Size (WxL)

**12.5m x 25m**



12.5M+ LOT WIDTH

SINGLE STOREY

Please note: Some floorplan option combinations may not be possible together. Please speak to a New Home Specialist.  
Base price shown as of 07 May 2026 and is subject to change.

