

# Ash 27

 4
  2
  2

The Ash 27, ideal for 14m+ blocks, is a statement home with 4 bedrooms, 2 bathrooms, and 2 living spaces. Its single-storey design captivates with bold and exotic elements, offering a memorable living experience. The master bedroom, a relaxing retreat, overlooks the front garden. The home's floor plan also includes a spacious living area, connecting to a gourmet kitchen, making it perfect for family gatherings. The additional lounge area enhances its entertainment appeal, offering a unique living experience for families with older children.

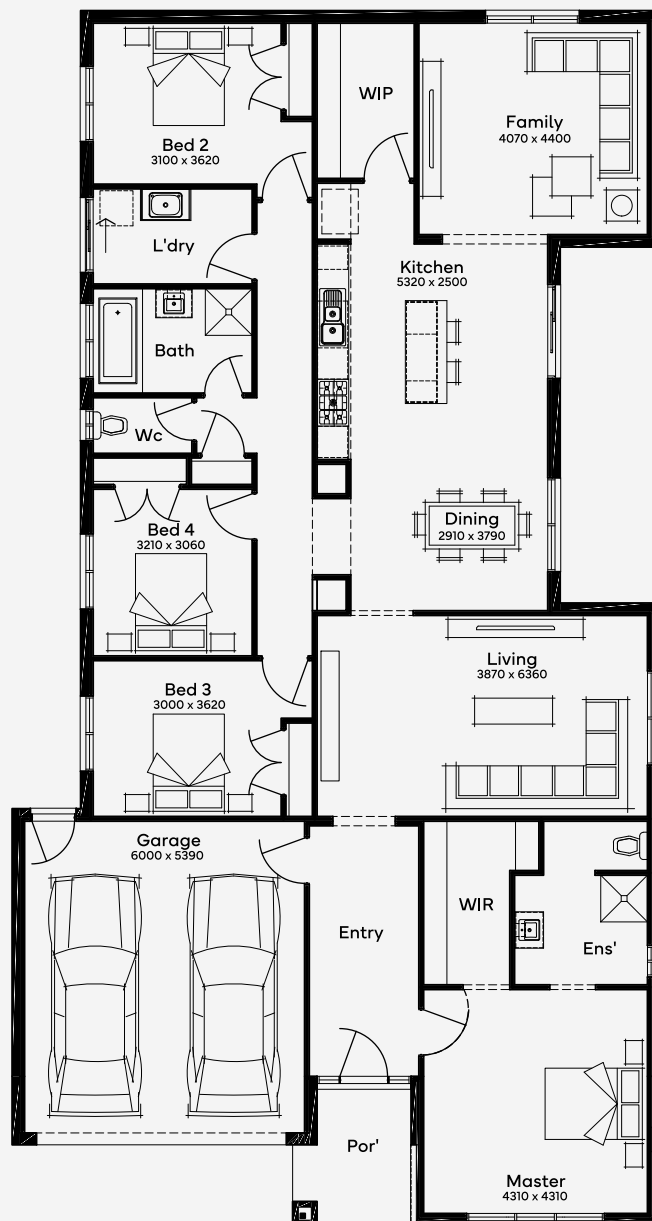
ELEVATE

House Area

**249.82 m<sup>2</sup>**

Min Lot Size (WxL)

**14m x 32m**



Please note: Some floorplan option combinations may not be possible together. Please speak to a New Home Specialist.  
Base price shown as of 18 December 2025 and is subject to change.

**SIMONDS**  
How Australia Homes

14M+ LOT WIDTH

SINGLE STOREY