

Balmoral 46



INSPIRATIONS

House Area

422.17 m²

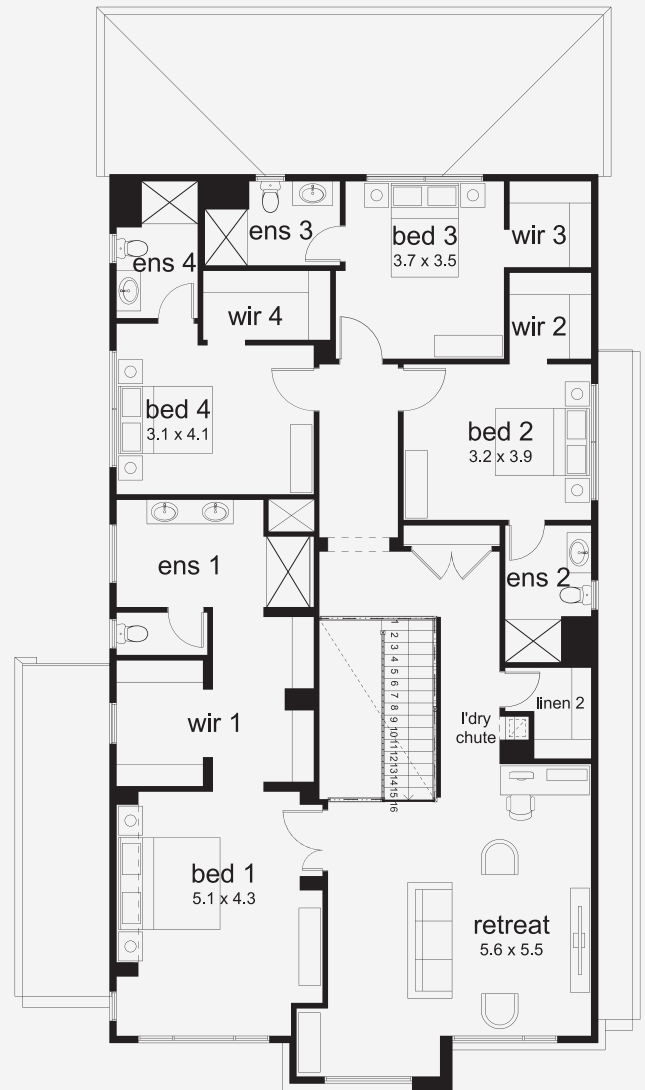
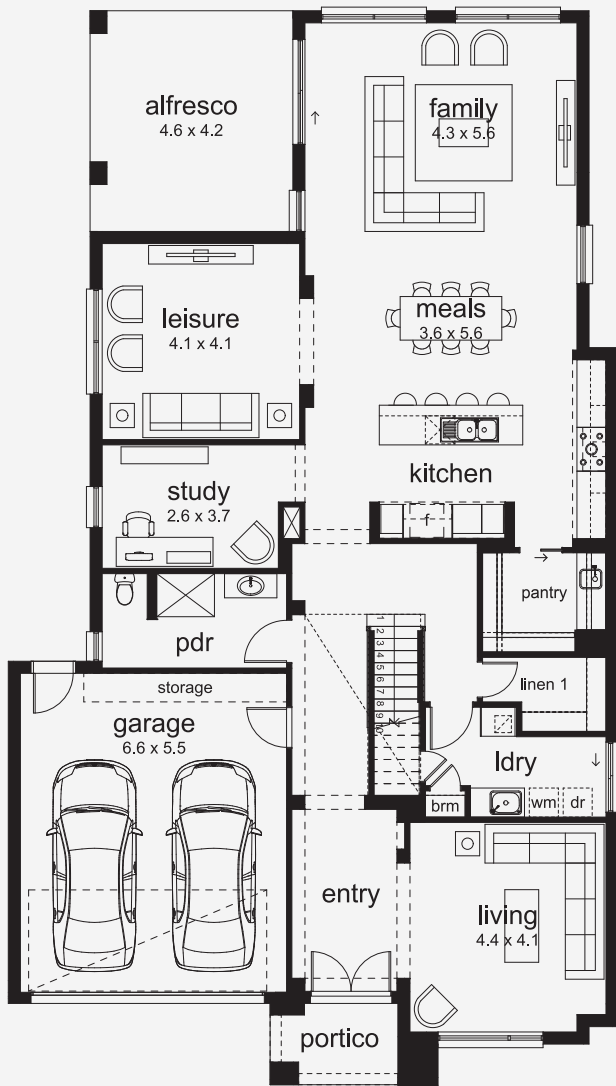
Min Lot Size (WxL)

14m x 30m

A Statement in Style and Space From its grand entry to its thoughtfully zoned living areas, the Balmoral delivers timeless style and everyday ease. With walk-in robes to all bedrooms and a showstopping master suite with an oversized dressing room, comfort comes standard. Three separate living zones downstairs ensure space for every moment, while a flexible floorplan - ranging from 38 to 50 squares - makes it easy to find your perfect fit.

14M+ LOT WIDTH

DOUBLE STOREY



Please note: Some floorplan option combinations may not be possible together. Please speak to a New Home Specialist.
Base price shown as of 07 May 2026 and is subject to change.

