

# Bowden 36

ELEVATE

5 3 2

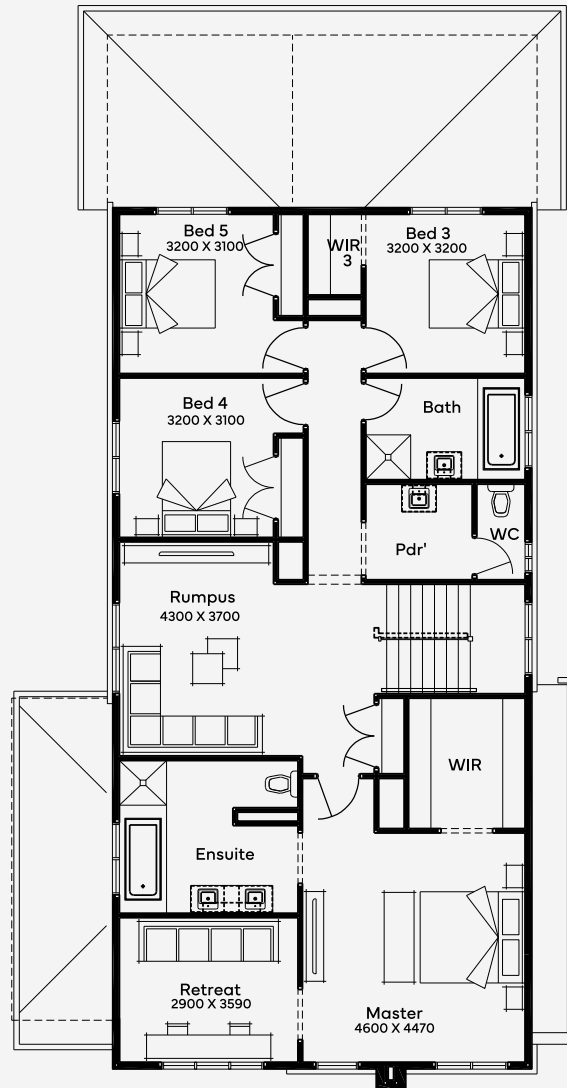
House Area

337.67 m<sup>2</sup>

Designed for a 12.5m+ block, the Bowden 36 integrates 5 bedrooms and 3 bathrooms with a 2-car garage in its grand floor plan. This double-storey home design exudes luxury, featuring a spacious guest bedroom on the ground floor and an expansive open-plan kitchen leading to an alfresco area. The master suite upstairs, complete with a large walk-in robe and an ensuite, offers a comfortable retreat. The home also includes a downstairs powder room and ample storage, making it a well-planned haven for families seeking a blend of lavishness and practicality.

12.5M+ LOT WIDTH

DOUBLE STOREY



Please note: Some floorplan option combinations may not be possible together. Please speak to a New Home Specialist.  
Base price shown as of 07 May 2026 and is subject to change.

