

# Cardwell 29

 5
  3
  2

The Cardwell 29, suitable for 12.5m+ blocks, features 5 bedrooms, 2 bathrooms, and a 3-car garage in its double-storey floor plan. This home design is crafted for luxurious family living, offering a spacious open-plan living area alongside private bedrooms. Perfect for families desiring style and comfort, the floor plan provides a layout that accommodates both communal experiences and individual retreats, harmoniously blending modern amenities with thoughtful design.

EMERGE

House Area

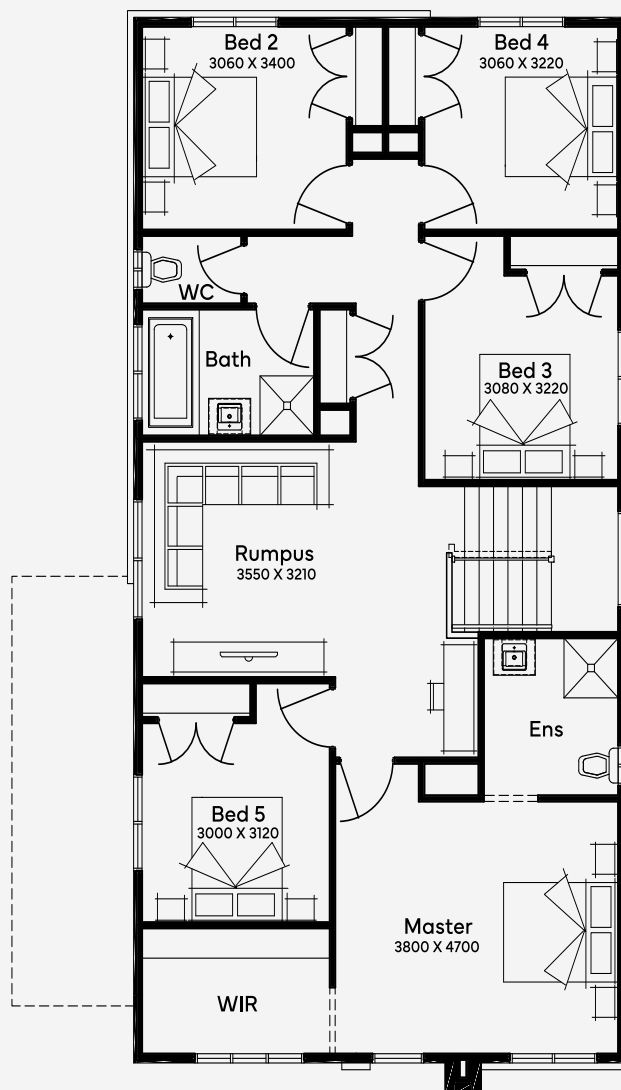
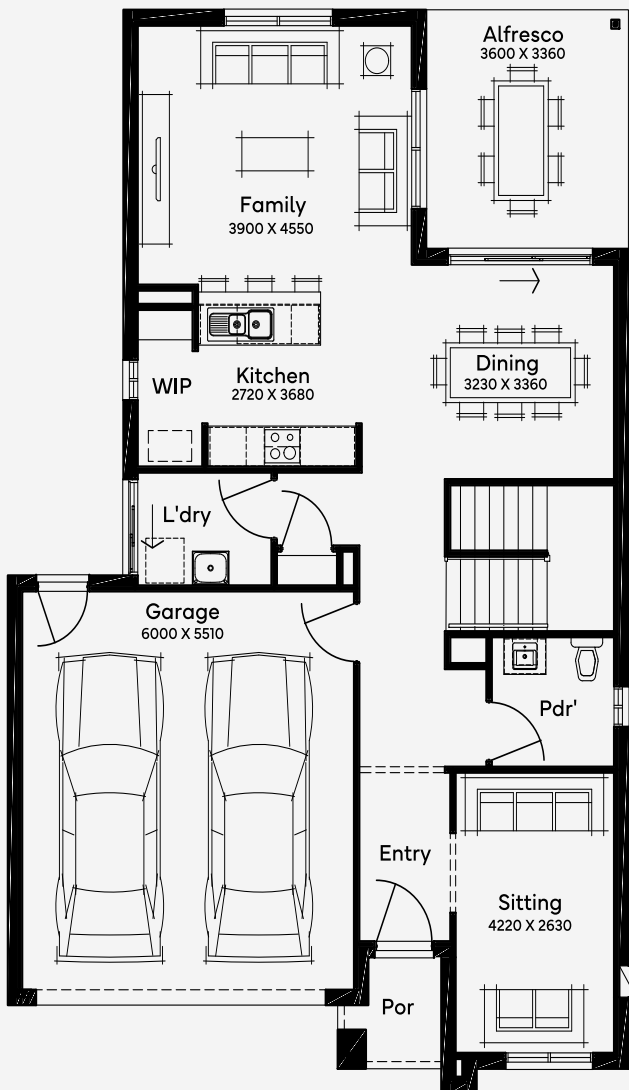
**269.95 m<sup>2</sup>**

Min Lot Size (WxL)

**12.5m x 25m**

12.5M+ LOT WIDTH

DOUBLE STOREY



Please note: Some floorplan option combinations may not be possible together. Please speak to a New Home Specialist.  
 Base price shown as of 07 May 2026 and is subject to change.

