

# Charlton 32



## INSPIRATIONS

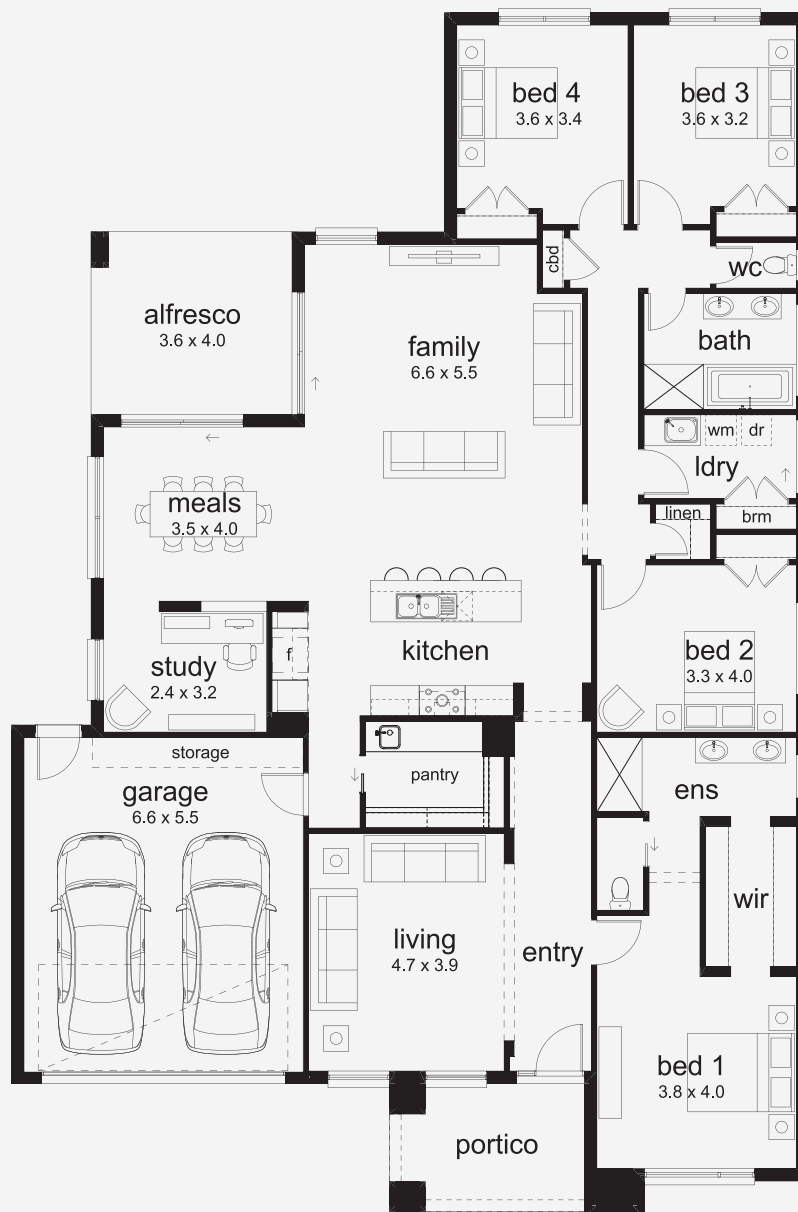
House Area  
**298.78 m<sup>2</sup>**

Min Lot Size (WxL)  
**17m x 32m**

Space to Live, Room to Grow The Charlton is designed with families in mind, offering a spacious layout that brings people together while still allowing room to unwind. With open-plan living at its heart, plus dedicated breakout areas, there's a place for every mood and moment. The master suite delivers privacy and comfort, and the alfresco invites easy indoor-outdoor living all year round.

17M+ LOT WIDTH

SINGLE STOREY



Please note: Some floorplan option combinations may not be possible together. Please speak to a New Home Specialist.  
 Base price shown as of 07 May 2026 and is subject to change.

