

# Chisholm 41

5 3 2

ELEVATE

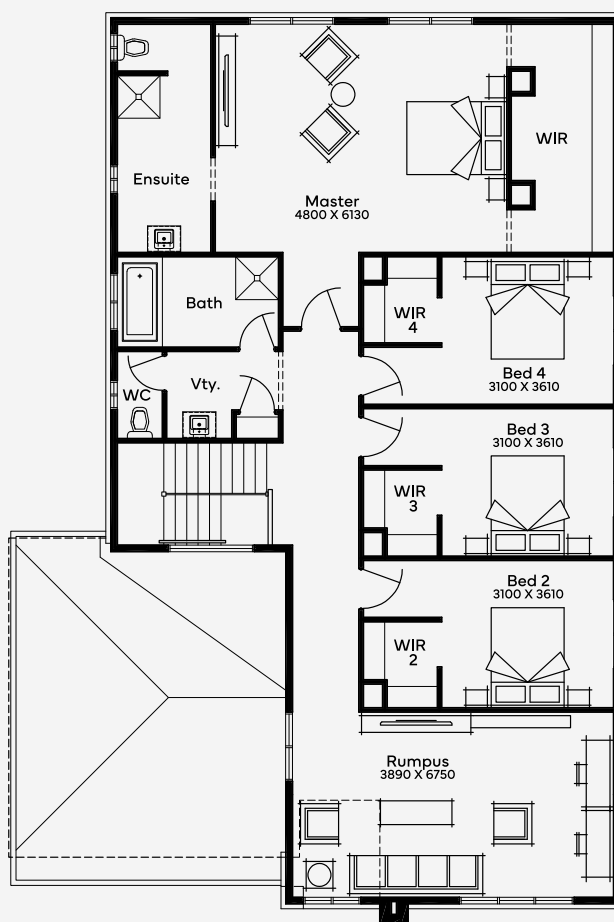
House Area

385.03 m<sup>2</sup>

Min Lot Size (WxL)

15m x 30m

Designed for 15m+ blocks, the Chisholm 41 offers a 5-bedroom, 3-bathroom floor plan and a 2-car garage. This double-storey house design is the epitome of space and comfort, featuring a ground floor with a guest bedroom, powder room, an additional lounge, and an open-concept kitchen with a striking walk-in pantry. The upper level houses a luxurious master bedroom, providing a serene retreat for parents, alongside well-designed bedrooms for family members. The Chisholm 41 perfectly balances communal family living with personal relaxation spaces.



Please note: Some floorplan option combinations may not be possible together. Please speak to a New Home Specialist.  
Base price shown as of 18 December 2025 and is subject to change.

**SIMONDS**  
How Australia Homes