

Cobden 26

 4
  2
  2

Smart Design, Seamless Living The Cobden puts connection and comfort first. At its core is a spacious open plan living zone that brings the kitchen, meals, and family areas together, perfect for everyday life and easy entertaining. The master suite at the front of the home offers a private retreat, while the remaining bedrooms are thoughtfully zoned toward the rear, creating quiet spaces for everyone to relax and recharge.

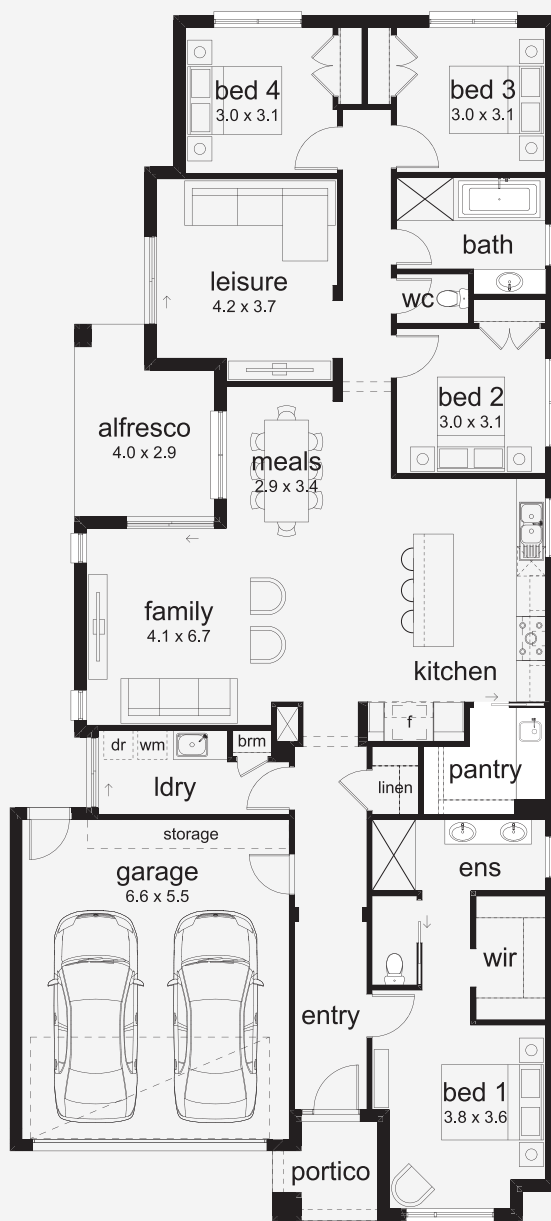
INSPIRATIONS

House Area

238.85 m²

Min Lot Size (WxL)

12.5m x 32m



Please note: Some floorplan option combinations may not be possible together. Please speak to a New Home Specialist.
Base price shown as of 18 December 2025 and is subject to change.

SIMONDS
How Australia Homes

12.5M+ LOT WIDTH

SINGLE STOREY