

# Grampian 19

READY NOW

4 2 2

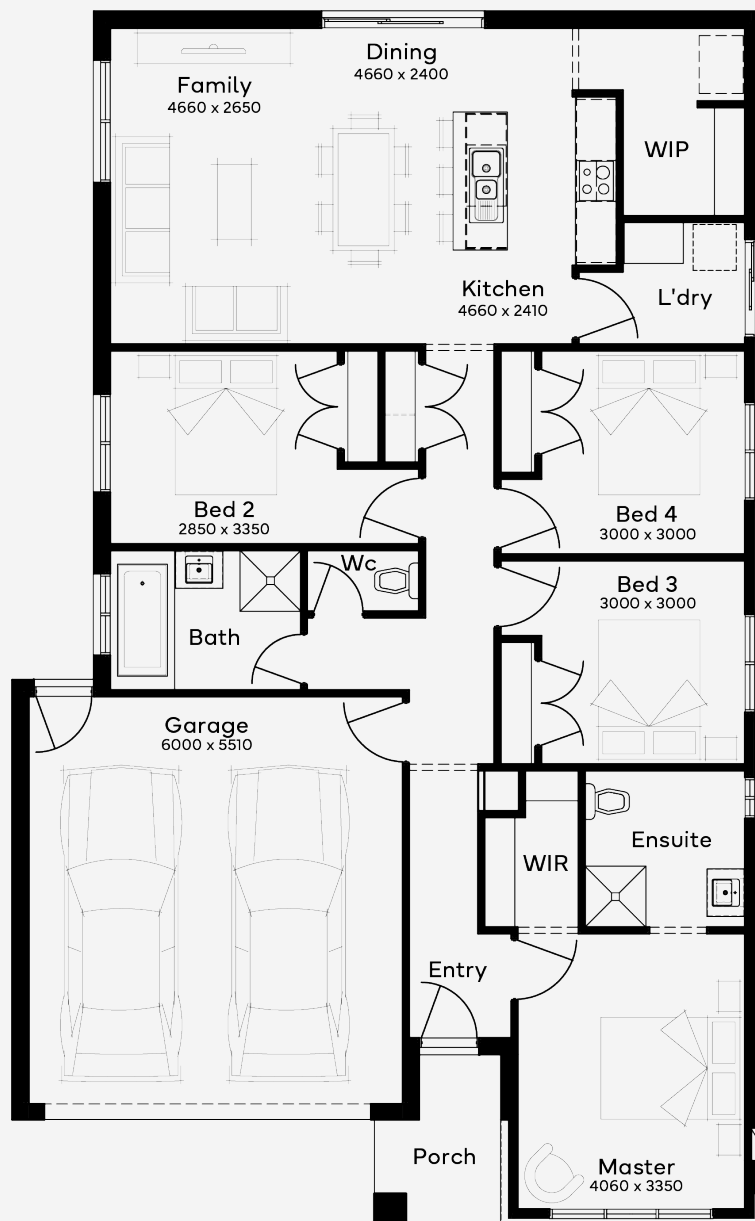
The Grampian 19, designed for a 12.5m+ block, features 4 bedrooms and 2 bathrooms, complemented by a 2-car garage, and captures the essence of modern urban living. The front of the single-storey home houses a luxurious master suite, providing a private sanctuary. The heart of the home is the expansive living area at the rear, bathed in natural light, offering a versatile space for relaxation and entertainment. The contemporary kitchen, centrally located in the floor plan, is perfect for hosting or enjoying quiet moments. Grampian 19 is more than a house; it's a statement of individual style and metropolitan living.

House Area

**176.98 m<sup>2</sup>**

Min Lot Size (WxL)

**12.5m x 25m**



Please note: Some floorplan option combinations may not be possible together. Please speak to a New Home Specialist.  
Base price shown as of 18 December 2025 and is subject to change.

**SIMONDS**  
How Australia Homes