

# Kiama 18



EMERGE

House Area

**173.36 m<sup>2</sup>**

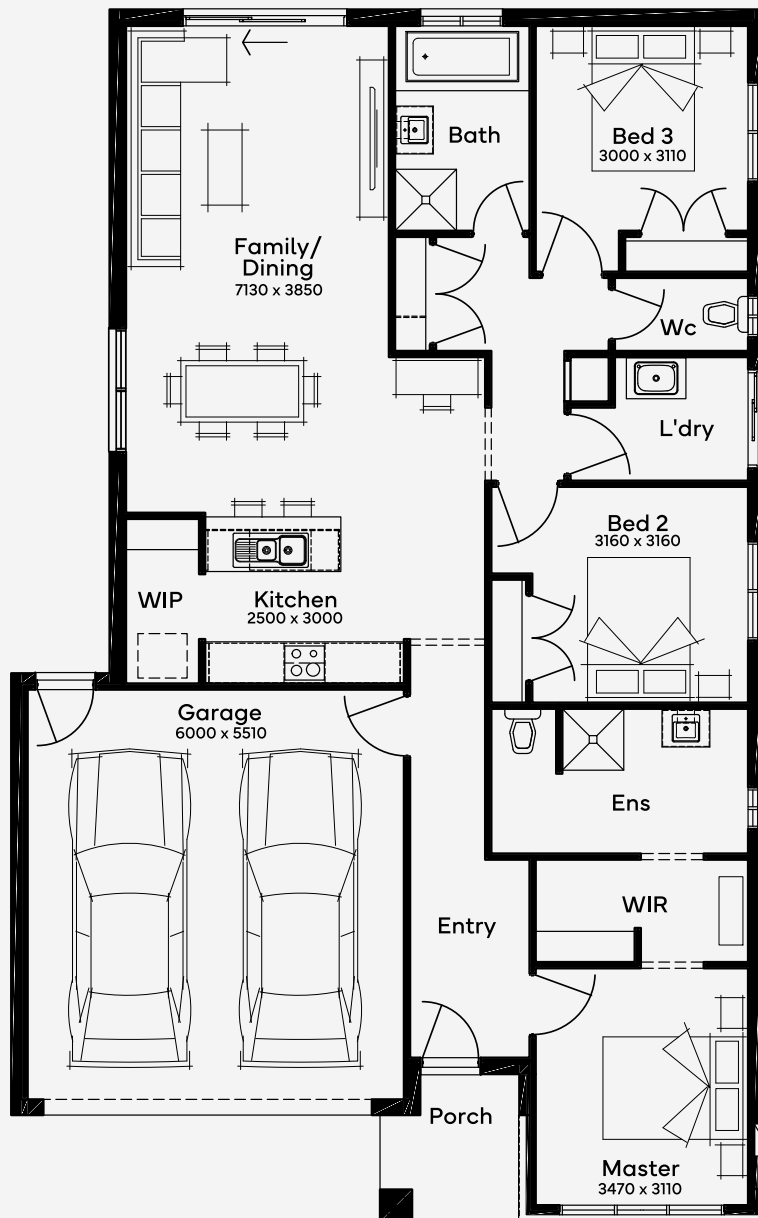
Min Lot Size (WxL)

**12.5m x 25m**

Designed for a 12.5m+ block, Kiama 18 is a 3-bedroom, 2-bathroom home with a 2-car garage, epitomising modern living at its finest. The central hallway of this single-storey home leads to a cosy living space, connecting the kitchen, dining, and lounge areas in a fluid layout. This home offers the flexibility to customise, with options like adding a butlers pantry or altering the master ensuite layout. The well-proportioned bedrooms are tucked away, providing peace and tranquility. Kiama 18 not only caters to functional living but also to those special moments of relaxation and family bonding.

12.5M+ LOT WIDTH

SINGLE STOREY



Please note: Some floorplan option combinations may not be possible together. Please speak to a New Home Specialist.  
Base price shown as of 07 May 2026 and is subject to change.

