

Kiama 22



EMERGE

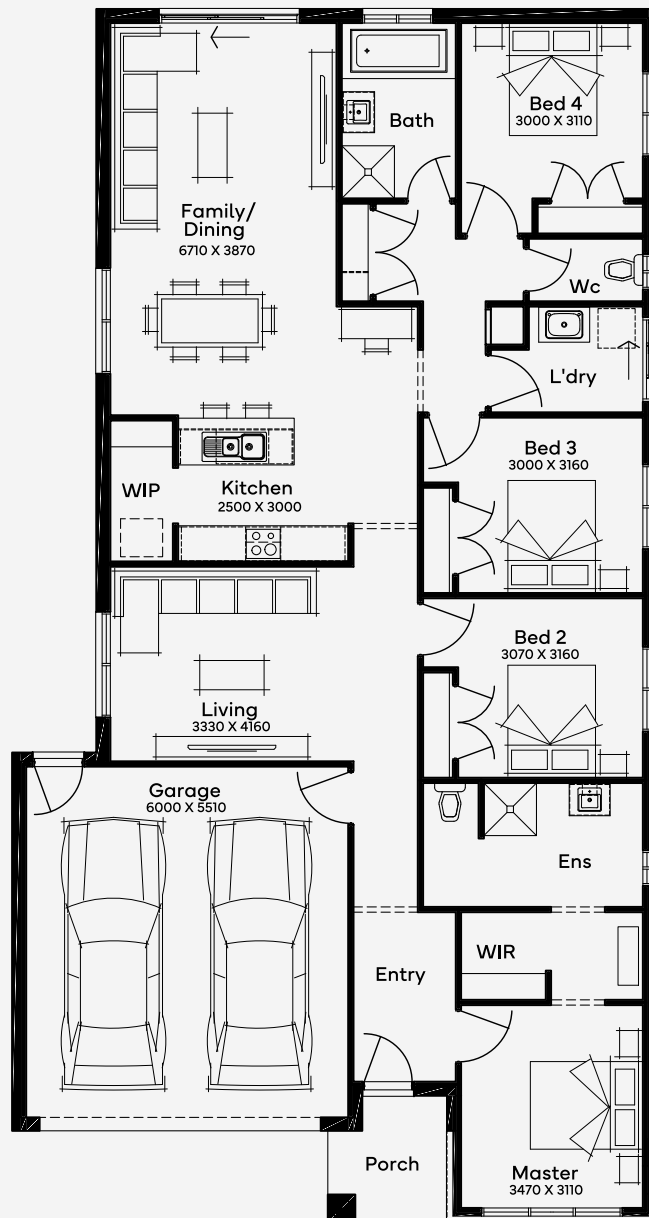
House Area

202.13 m²

Min Lot Size (WxL)

12.5m x 28m

The Kiama 22, with its 4 bedrooms and 2 bathrooms, accommodates a 2-car garage and is designed for a 12.5m+ block, exemplifying an ideal single-storey family home. The design features a central passage leading to a sleek kitchen with a walk-in pantry and bench seating. The kitchen seamlessly integrates with the dining and family area, extending to the garden, perfect for indoor-outdoor living. At the front, the master suite offers a serene retreat with a garden view. A unique aspect of this home is its dedicated children's wing, providing a private space for kids. The layout is completed with a second living area, adding versatility to the home's functionality.



Please note: Some floorplan option combinations may not be possible together. Please speak to a New Home Specialist.
Base price shown as of 07 May 2026 and is subject to change.

SIMONDS
How Australia Homes

12.5M+ LOT WIDTH

SINGLE STOREY