

Kimberley 24



ASPIRATIONS

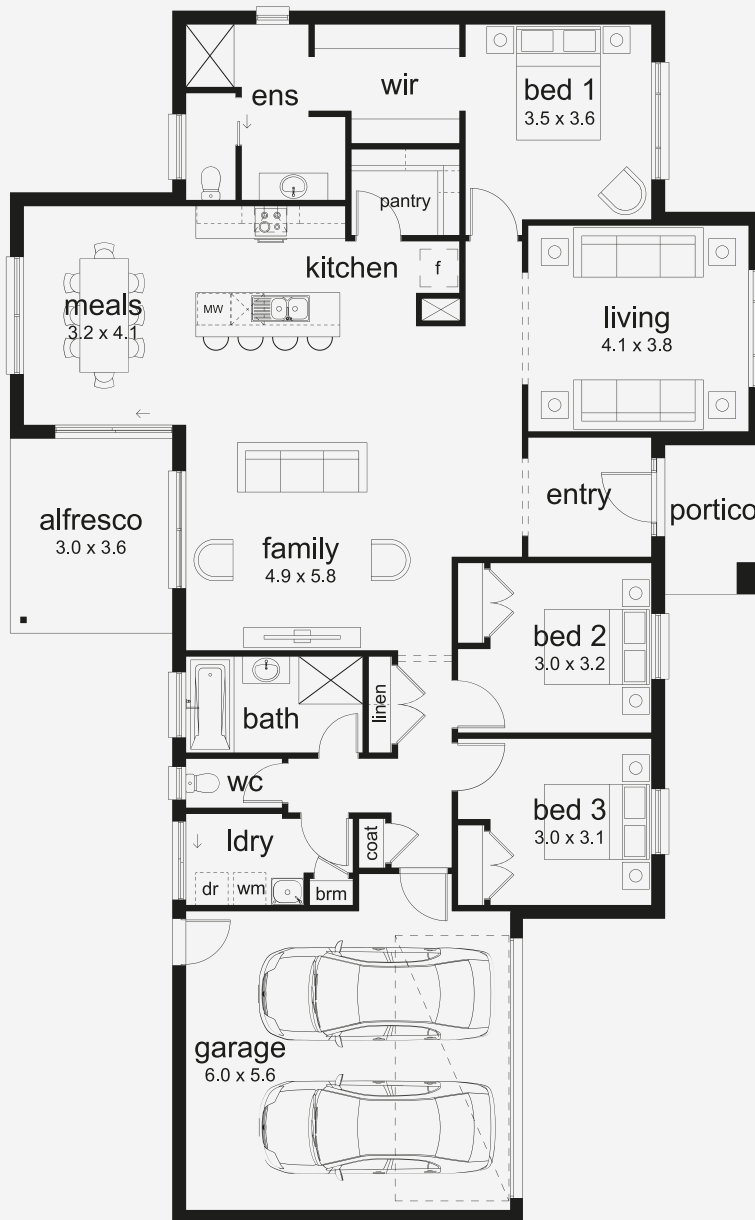
House Area

226.68 m²

Min Lot Size (WxL)

25m x 21m

Open Living, Country Comfort Made for wider blocks and open skies, the Kimberley is ideal for rural or acreage living. With large windows framing the views front and back, the home is designed to connect you to the outdoors. Inside, four spacious bedrooms with walk-in robes, two living areas, a study and an inviting alfresco offer all the room you need to live and grow in comfort.



25M+ LOT WIDTH

SINGLE STOREY

Please note: Some floorplan option combinations may not be possible together. Please speak to a New Home Specialist.
Base price shown as of 07 May 2026 and is subject to change.