

# Leighton 20

 4
  2
  2

Welcome to a beautifully crafted for a 12.5m+ single-story residence designed for modern living, the Leighton 20. This thoughtfully laid-out home features four generously sized bedrooms, including a master suite complete with a walk-in robe and a private ensuite. The heart of the home is the open-concept kitchen, dining, and living area, perfect for family gatherings and entertaining guests. With ample storage, including a walk-in pantry and linen closet, functionality is at the forefront. The two-car garage provides secure parking and direct access to the home, while the laundry is conveniently located near the secondary bedrooms. This floor plan balances comfort, style, and practicality, making it an ideal choice for families of all sizes.

EMERGE

House Area

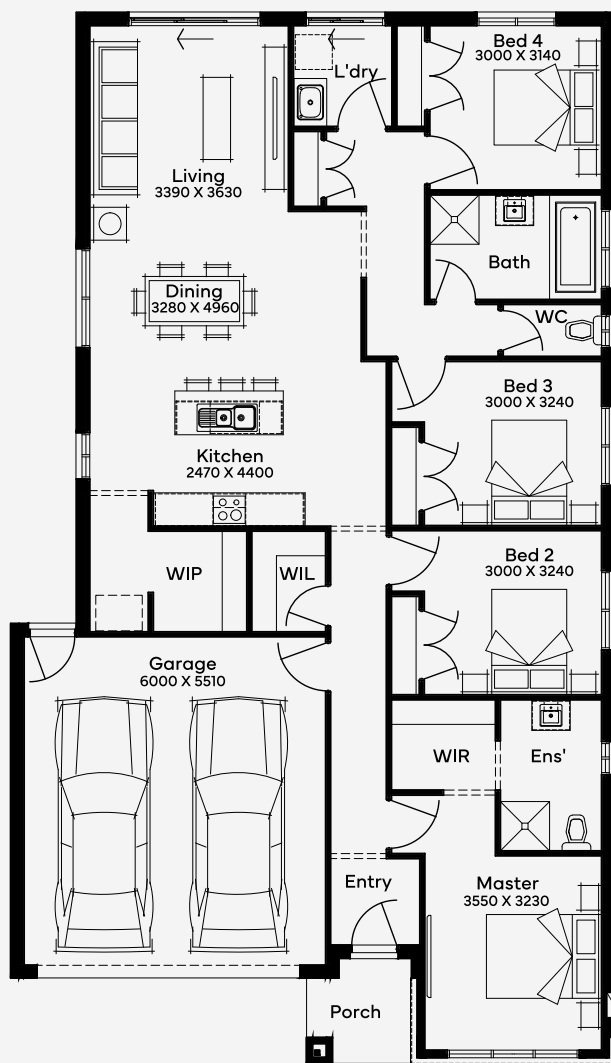
**189.85 m<sup>2</sup>**

Min Lot Size (WxL)

**12.5m x 28m**

12.5M+ LOT WIDTH

SINGLE STOREY



Please note: Some floorplan option combinations may not be possible together. Please speak to a New Home Specialist.  
Base price shown as of 18 December 2025 and is subject to change.

**SIMONDS**  
How Australia Homes