

Mayne 30

4 2 2

ELEVATE

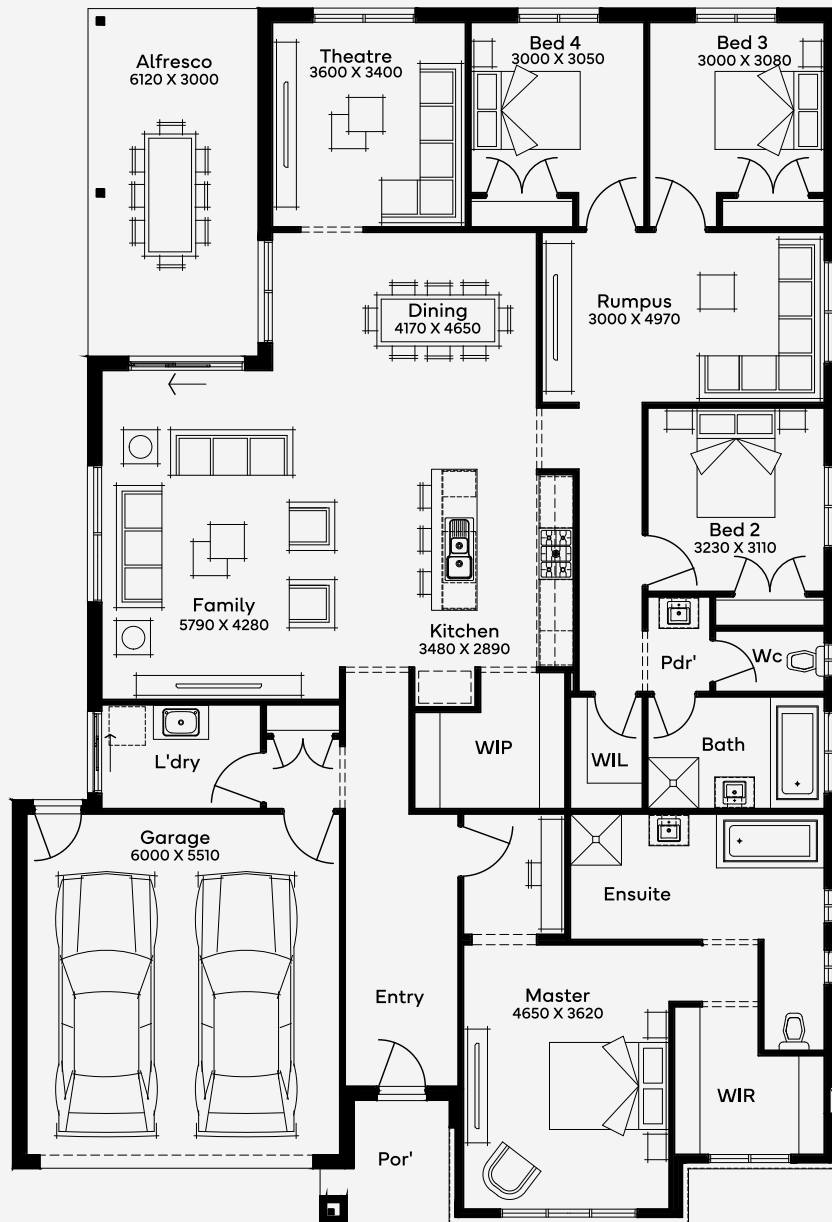
House Area

283.7 m²

Min Lot Size (WxL)

16m x 30m

Discover Mayne 30, a stunning 4 bedroom, 2 bathroom, single storey home thoughtfully designed for modern living and comfort crafted for a 16m+ block. The open-plan layout features a large family area that flows effortlessly into the gourmet kitchen, complete with a central island and a walk-in pantry. Adjacent to the family space is a formal dining area, perfect for hosting, while the separate theatre room offers an ideal retreat for movie nights. The home also features a versatile rumpus room, ideal for a playroom or home office. You can step outside to the alfresco area, which extends the living space outdoors.



16M+ LOT WIDTH

SINGLE STOREY

Please note: Some floorplan option combinations may not be possible together. Please speak to a New Home Specialist.
Base price shown as of 07 May 2026 and is subject to change.

SIMONDS
How Australia Homes