

Miller 25



ELEVATE

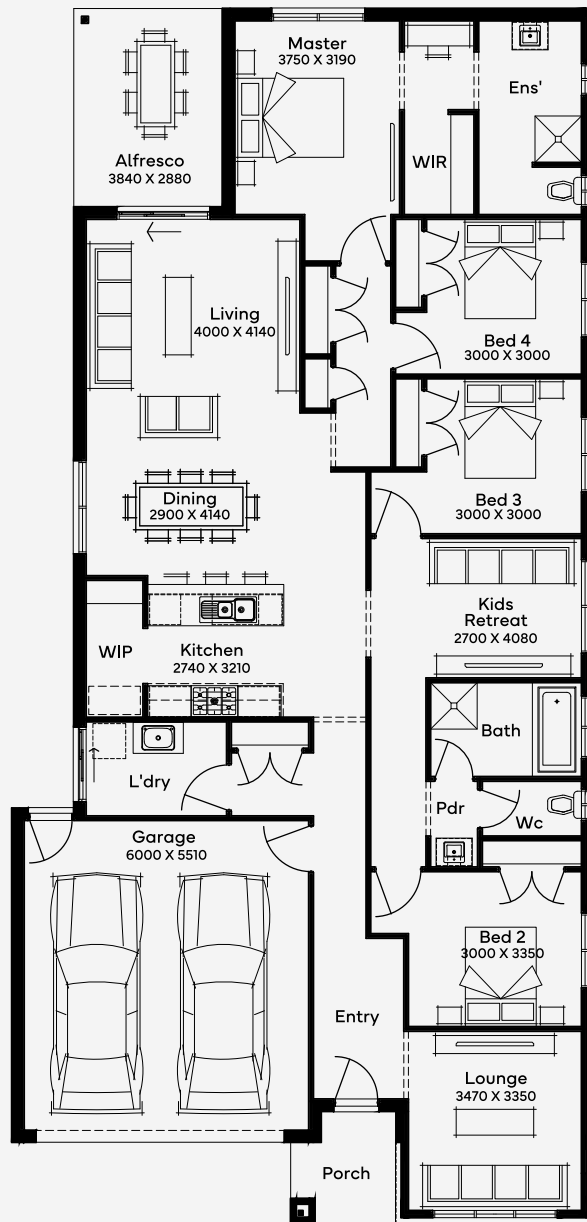
House Area

237.96 m²

Min Lot Size (WxL)

12.5m x 32m

Suitable for 12.5m+ blocks, our Miller 25 home is a 4-bedroom, 2-bathroom floor plan with a 2-car garage. This single-storey house design begins with a grand hallway leading to an open-plan area, where the kitchen, featuring a walk-in pantry and island bench, becomes a hub for family interaction. The living zones extend to an enclosed alfresco, perfect for outdoor activities. The master bedroom, a serene retreat with an ensuite and walk-in robe, offers privacy. Additionally, a conveniently located second bedroom is ideal as a nursery, while the other bedrooms, a second bathroom, and a theatre room form a separate wing, ensuring a blend of communal and private spaces - perfect for family dynamics!



12.5M+ LOT WIDTH

SINGLE STOREY

Please note: Some floorplan option combinations may not be possible together. Please speak to a New Home Specialist.
Base price shown as of 07 May 2026 and is subject to change.

SIMONDS
How Australia Homes