

Murraya 14



EMERGE

House Area

130.46 m²

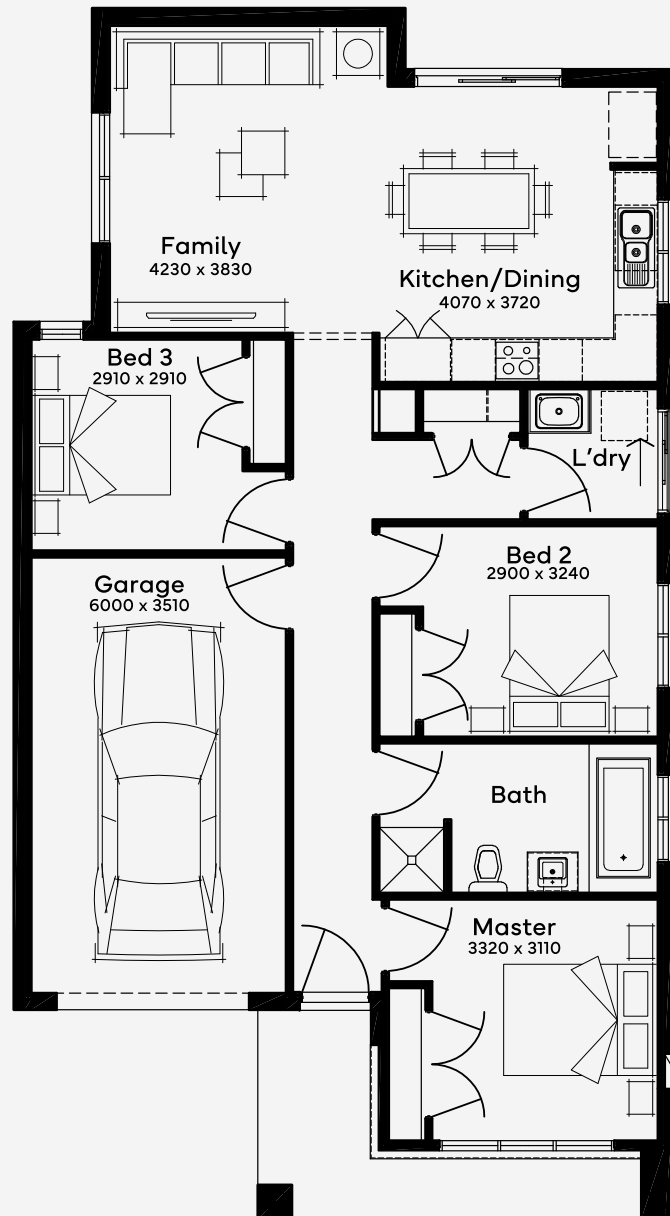
Min Lot Size (WxL)

10.5m x 21m

The Murraya 14, a chic single-storey 3-bedroom, 1-bathroom home, masterfully combines style with practical living. Featuring a single-car garage and a well-designed living space, this house plan is a testament to modern, efficient design. The open-plan layout enriches the sense of space, making it perfect for both lively family gatherings and peaceful personal retreats. Suitable for a minimum block width of just 10.5m+, Murraya 14 is an ideal selection for First Home Buyers or Investors looking for a blend of sophistication and functionality.

10.5M+ LOT WIDTH

SINGLE STOREY



Please note: Some floorplan option combinations may not be possible together. Please speak to a New Home Specialist.
Base price shown as of 07 May 2026 and is subject to change.

SIMONDS
How Australia Homes