

Palmview 35

4 3 2

ELEVATE

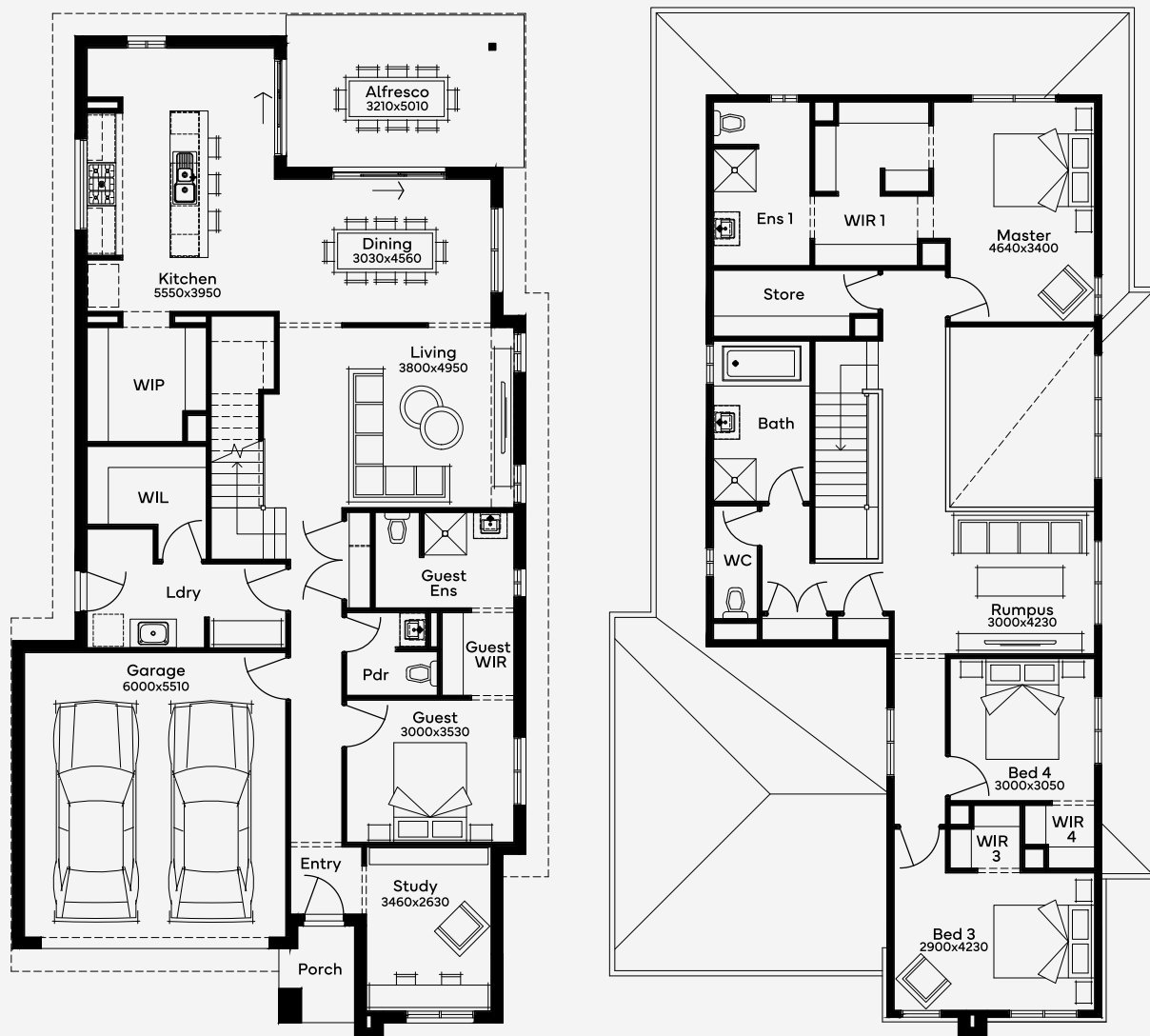
House Area

327.28 m²

Min Lot Size (WxL)

12.5m x 28m

For those who value expansive, upscale living, the Palmview 35 offers a two-storey home design focusing on luxury. It caters to families looking for architectural grandeur with 4 well-appointed bedrooms, 3.5 bathrooms, and a convenient 2 car garage. This plan features a home theatre and multiple living areas across two levels. Ideal for downsizers or investors, the Palmview 35 ensures every family member enjoys comfort and style.



Please note: Some floorplan option combinations may not be possible together. Please speak to a New Home Specialist.
Base price shown as of 18 December 2025 and is subject to change.

SIMONDS
How Australia Homes

12.5M+ LOT WIDTH

DOUBLE STOREY