

Pentland 45



ELEVATE

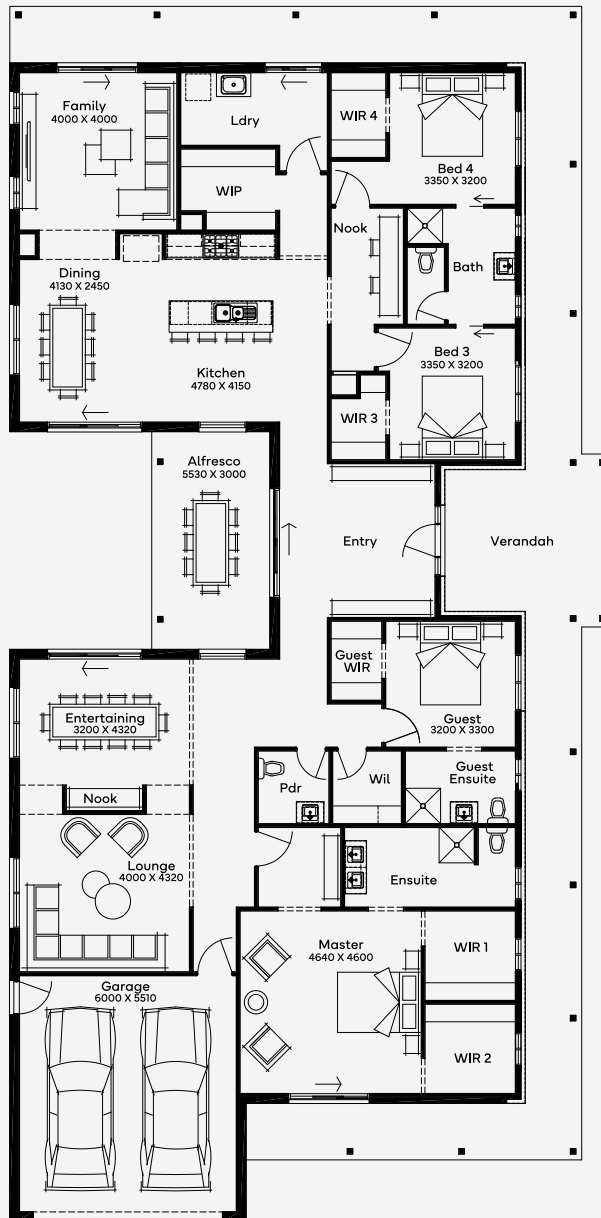
House Area

417.35 m²

Min Lot Size (WxL)

32m x 22m

Step into the Pentland 45, where design contemporary design meets unparalleled functionality. This meticulously crafted floor plan is tailored to enhance your living experience with its seamless blend of elegance and practicality. This 4 bedroom, 3 bathroom, 2 living, home is designed for a 18m+ block single-storey home. Upon entering, you are welcomed by a grand foyer that leads you to the expansive open-plan living area. Bathed in natural light, this space effortlessly combines the living, dining, and kitchen areas, making it the perfect setting for both entertaining and day-to-day family activities. Whether it's a casual movie night or a lively outdoor gathering, these spaces are perfect for creating lasting memories. The integration of indoor and outdoor living spaces allows for a fluid and dynamic lifestyle, catering to all your needs. Every detail has been carefully considered to create a home that is not



32M+ LOT WIDTH

SINGLE STOREY

Please note: Some floorplan option combinations may not be possible together. Please speak to a New Home Specialist.
Base price shown as of 07 May 2026 and is subject to change.

