

Redhill 30

5 2 2

ELEVATE

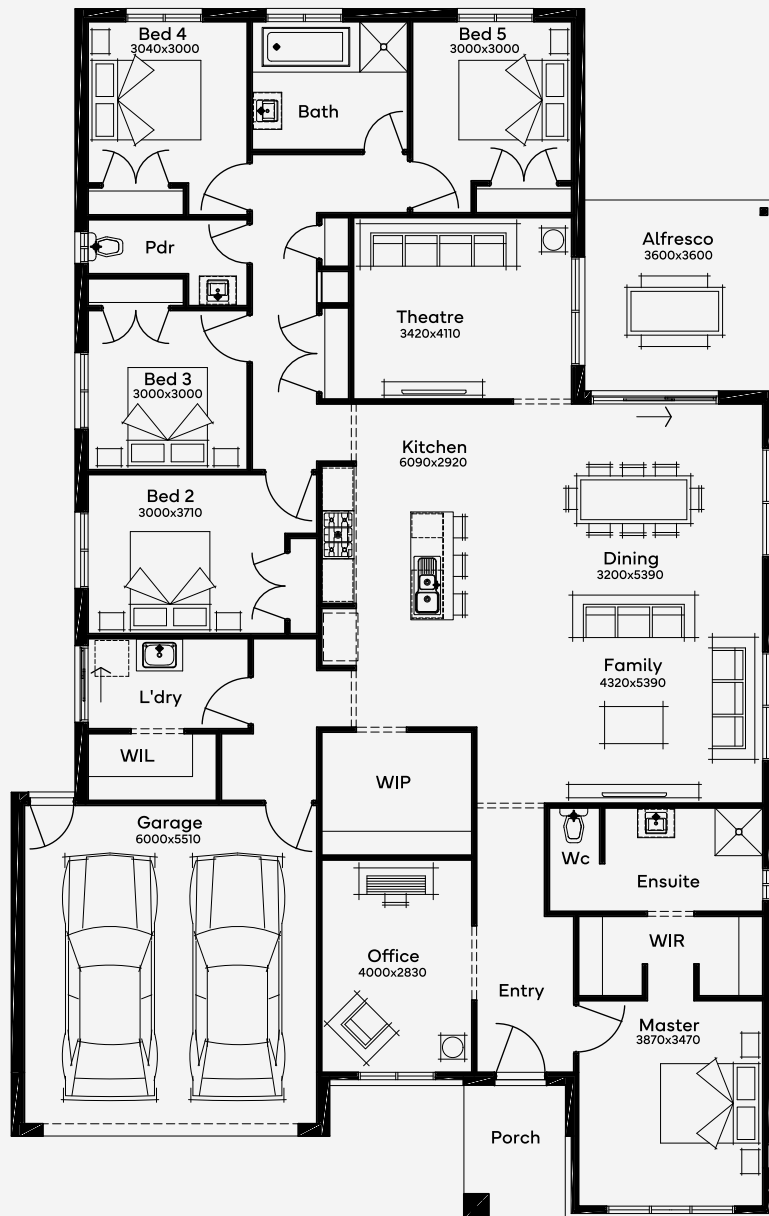
House Area

281.56 m²

Min Lot Size (WxL)

16m x 30m

The Redhill 30, a 5-bedroom, 2-bathroom home, embodies contemporary charm and practical living. Its sprawling single-storey layout includes an open-plan core that encourages social connection and relaxation. The kitchen, efficiently linked to the laundry, butler's pantry, linen storage, and garage, combines 'wow' moments with functionality. The master suite and home office, overlooking the street, offer an adult sanctuary. The perfect home to provide balanced family living!



Please note: Some floorplan option combinations may not be possible together. Please speak to a New Home Specialist.
Base price shown as of 07 May 2026 and is subject to change.

SIMONDS
How Australia Homes