

Riverway 26

 4
  2
  2

ELEVATE

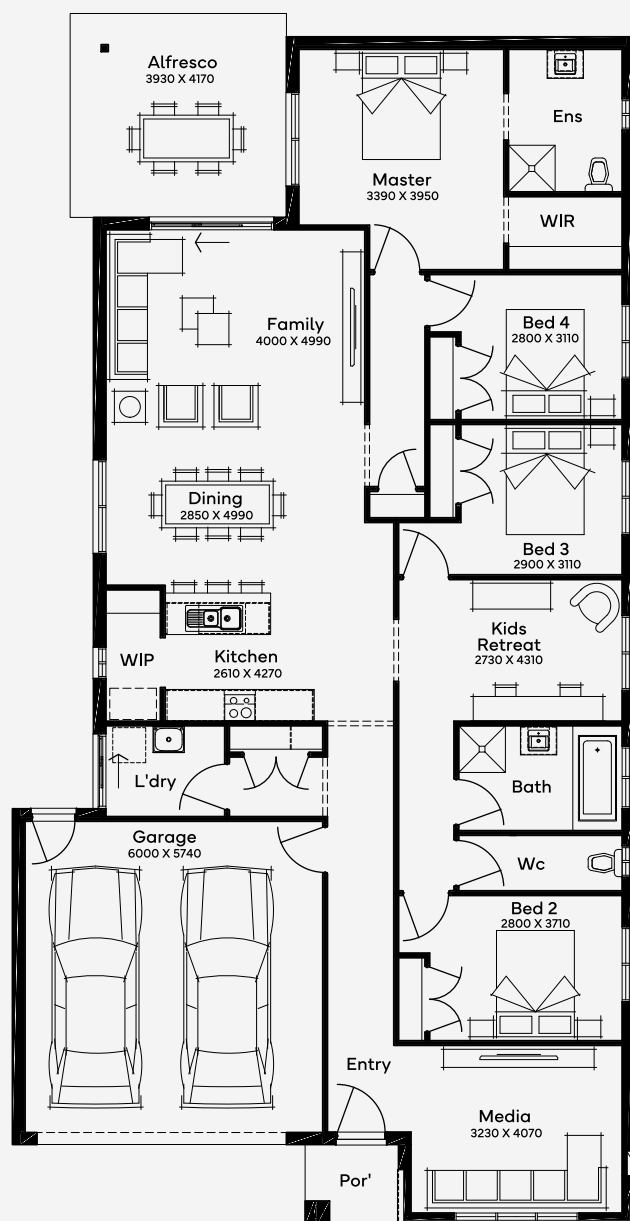
House Area

246.12 m²

Min Lot Size (WxL)

14m x 30m

Welcome to the Riverway 26, perfect for 14m+ blocks, is a 4-bedroom, 2-bathroom single-storey home with a 2-car garage. This floor plan is crafted for families valuing togetherness and privacy. The open-plan living area, the home's centrepiece, is complemented by additional relaxation and entertainment spaces. Bedrooms are strategically positioned for privacy, making the home a contemporary sanctuary for family living, balancing communal areas with secluded retreats.



Please note: Some floorplan option combinations may not be possible together. Please speak to a New Home Specialist.
Base price shown as of 18 December 2025 and is subject to change.

SIMONDS
How Australia Homes

14M+ LOT WIDTH

SINGLE STOREY