

# Routley 16

3 2 1

EMERGE

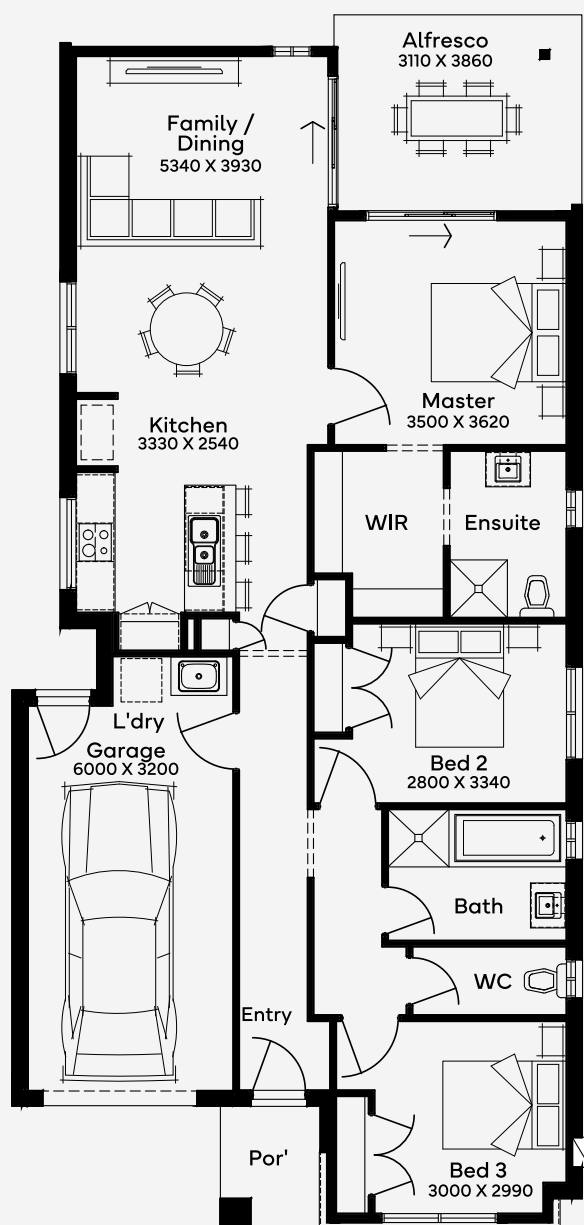
House Area

150.57 m<sup>2</sup>

Embrace the Routley 16, this elegantly designed single storey, 3 bedroom, 2 bathroom, 1 car garage home that balances sophistication with everyday comfort. Crafted for a 10m+ block the open-plan layout brings together the kitchen, dining, and living areas, create a spacious hub perfect for family gatherings or entertaining. The living range features a large island bench in the kitchen and alfresco, offering both style and practicality for the family. The master suite is a true haven, complete with a walk-in robe and a private ensuite, giving you a peaceful retreat. Two additional well-proportioned bedrooms share easy access to the main bathroom and separate water closet, offering convenience for family or guests.

10M+ LOT WIDTH

SINGLE STOREY



Please note: Some floorplan option combinations may not be possible together. Please speak to a New Home Specialist.  
Base price shown as of 18 December 2025 and is subject to change.

**SIMONDS**  
How Australia Homes