

# Shaw 19

EMERGE



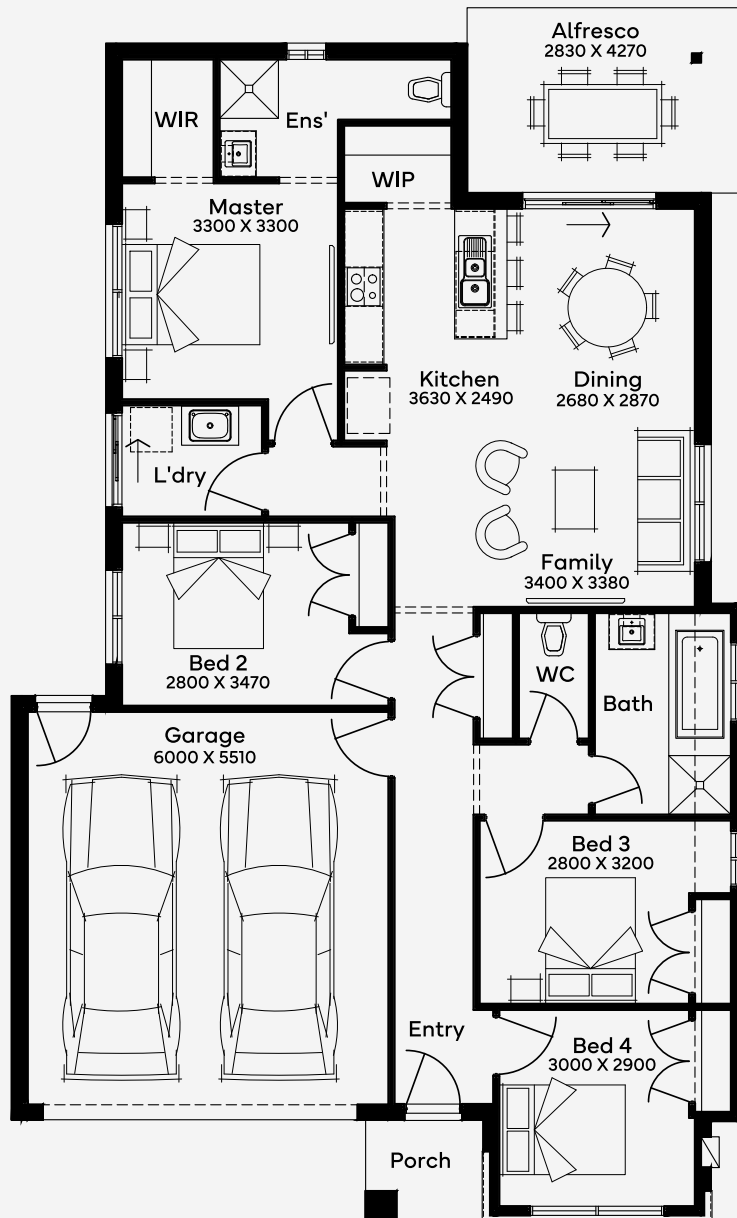
House Area

175.91 m<sup>2</sup>

The Shaw 19 is a thoughtfully designed single-storey home that combines modern living with practical functionality. Designed for 12.5m+ blocks of land and featuring 4 bedrooms, 2 bathrooms, and a 2-car garage, this home offers ample space for families seeking comfort and convenience. The open-plan living and dining areas create a welcoming atmosphere, while the well-appointed kitchen serves as the heart of the home. The master suite tucked away at the rear offers adults privacy and peace and quiet, away from the secondary bedrooms at the front of the home. With an efficient use of space and contemporary finishes, the Shaw 19 is an ideal floorplan for first-home buyers or downsizers seeking a low-maintenance lifestyle.

12.5M+ LOT WIDTH

SINGLE STOREY



Please note: Some floorplan option combinations may not be possible together. Please speak to a New Home Specialist.  
Base price shown as of 07 May 2026 and is subject to change.

