

# Sidney 18

 4
  2
  2

EMERGE

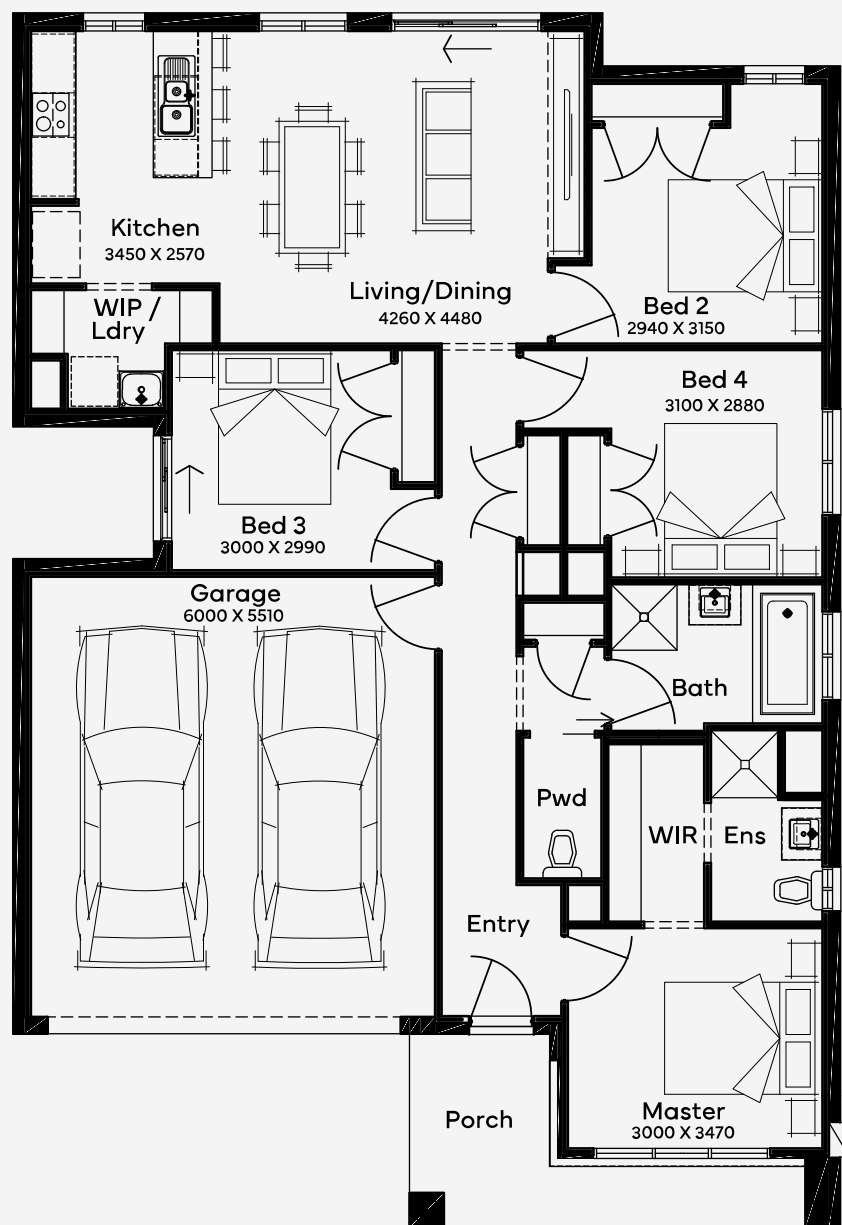
House Area

**166.45 m<sup>2</sup>**

Min Lot Size (WxL)

**12.5m x 21m**

Sidney 18 presents a practical single-storey home design with 4 bedrooms, 2 bathrooms, and a 2-car garage, tailored for those who seek efficient use of space without sacrificing style. Perfect for first-home buyers or downsizers, this design maximises living areas and offers privacy. Fitting for narrower blocks, it embodies affordable luxury, making it an excellent choice for small families or investors prioritising modern, streamlined living.



Please note: Some floorplan option combinations may not be possible together. Please speak to a New Home Specialist.  
Base price shown as of 18 December 2025 and is subject to change.

**SIMONDS**  
How Australia Homes

12.5M+ LOT WIDTH

SINGLE STOREY